



L-type Ca^{++} CP γ 7 Polyclonal Antibody

Catalog No	YP-Ab-16462
Isotype	IgG
Reactivity	Human;Mouse;Rat
Applications	WB;ELISA
Gene Name	CACNG7
Protein Name	Voltage-dependent calcium channel gamma-7 subunit
Immunogen	The antiserum was produced against synthesized peptide derived from human CACNG7. AA range:198-247
Specificity	L-type Ca^{++} CP γ 7 Polyclonal Antibody detects endogenous levels of L-type Ca^{++} CP γ 7 protein.
Formulation	Liquid in PBS containing 50% glycerol, 0.5% BSA and 0.02% sodium azide.
Source	Polyclonal, Rabbit,IgG
Purification	The antibody was affinity-purified from rabbit antiserum by affinity-chromatography using epitope-specific immunogen.
Dilution	Western Blot: 1/500 - 1/2000. ELISA: 1/20000. Not yet tested in other applications.
Concentration	1 mg/ml
Purity	$\geq 90\%$
Storage Stability	$-20^{\circ}C$ /1 year
Synonyms	CACNG7; Voltage-dependent calcium channel gamma-7 subunit; Neuronal voltage-gated calcium channel gamma-7 subunit; Transmembrane AMPAR regulatory protein gamma-7; TARP gamma-7
Observed Band	40kD
Cell Pathway	Cell membrane ; Multi-pass membrane protein .
Tissue Specificity	Detected in heart left ventricle (PubMed:21127204). Widely expressed.
Function	function:Thought to stabilize the calcium channel in an inactivated (closed) state.,similarity:Belongs to the PMP-22/EMP/MP20 family. CACNG subfamily.,subunit:The L-type calcium channel is composed of five subunits: alpha-1, alpha-2/delta, beta and gamma.,tissue specificity:Widely expressed.,
Background	calcium voltage-gated channel auxiliary subunit gamma 7(CACNG7) Homo sapiens The protein encoded by this gene is a type II transmembrane AMPA receptor regulatory protein (TARP). TARPs regulate both trafficking and channel gating of the AMPA receptors. This gene is part of a functionally diverse eight-member protein subfamily of the PMP-22/EMP/MP20 family and is located in a cluster with two family members, a type I TARP and a calcium channel gamma subunit. [provided by RefSeq, Dec 2010],



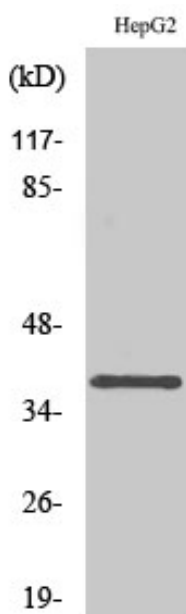
matters needing attention

Avoid repeated freezing and thawing!

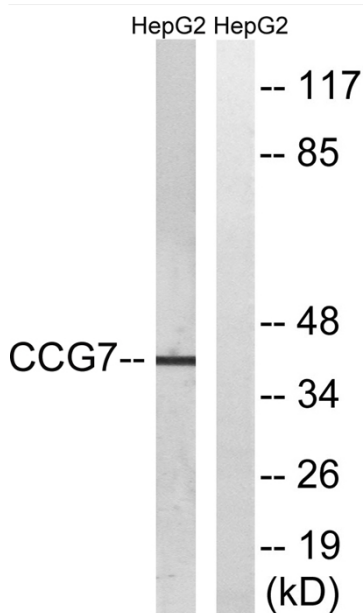
Usage suggestions

This product can be used in immunological reaction related experiments. For more information, please consult technical personnel.

Products Images



Western Blot analysis of various cells using L-type Ca⁺⁺ CP γ7 Polyclonal Antibody diluted at 1:1000



Western blot analysis of lysates from HepG2 cells, using CACNG7 Antibody. The lane on the right is blocked with the synthesized peptide.